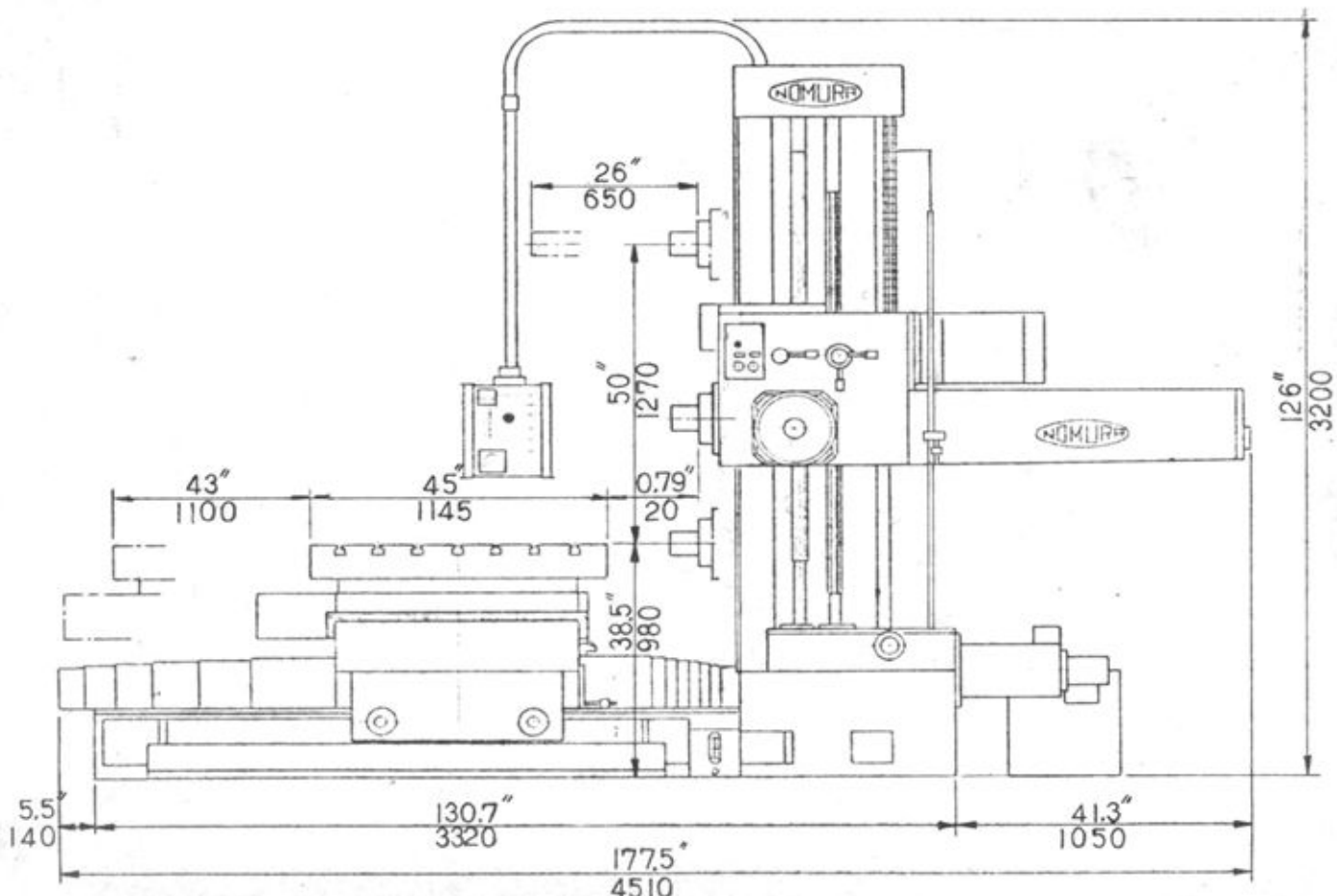
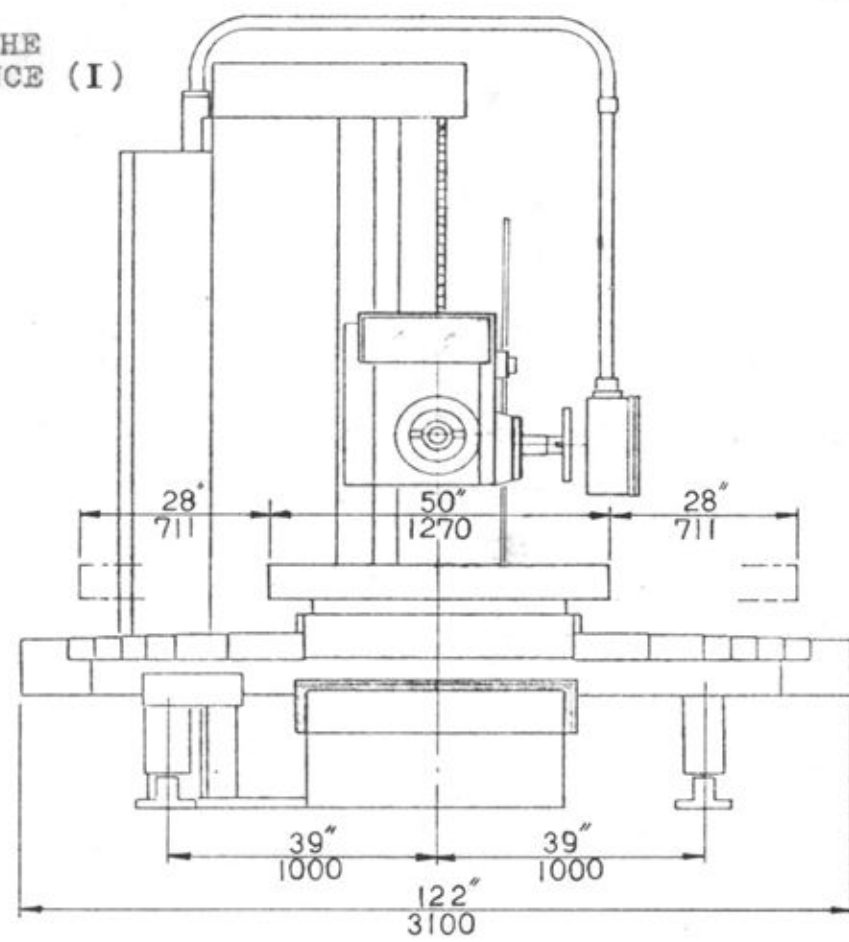
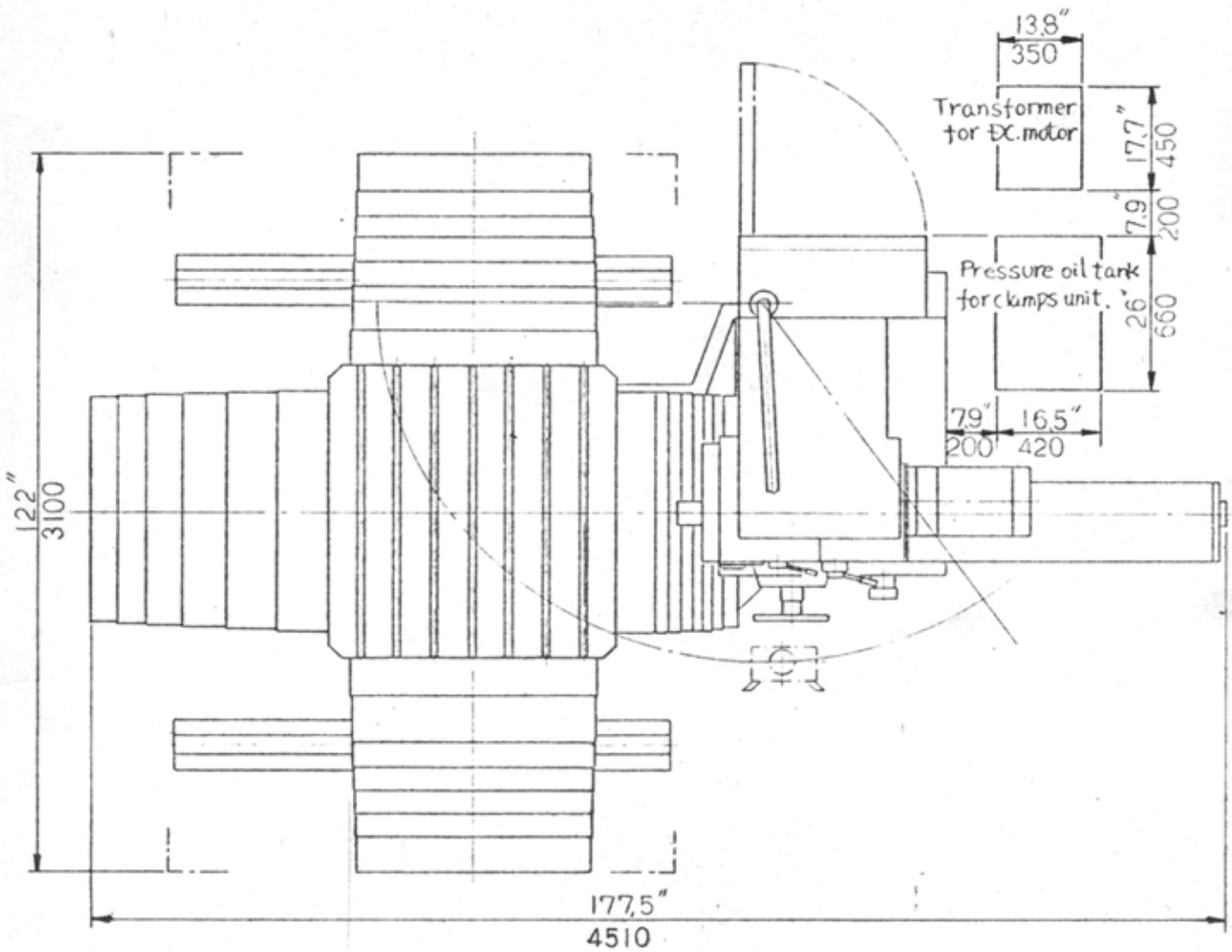


DIMENSIONS OF THE APPEARANCE (I)

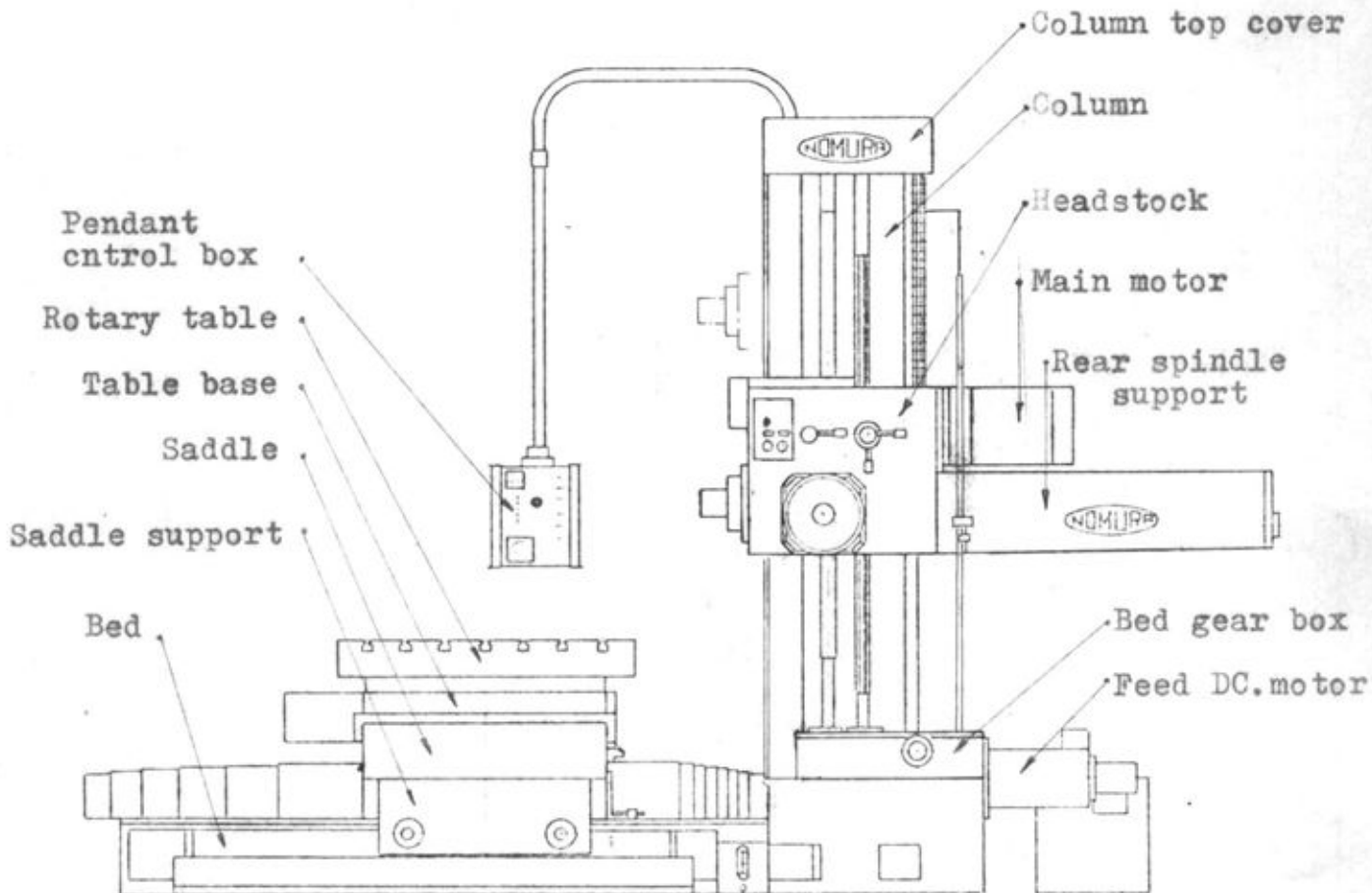
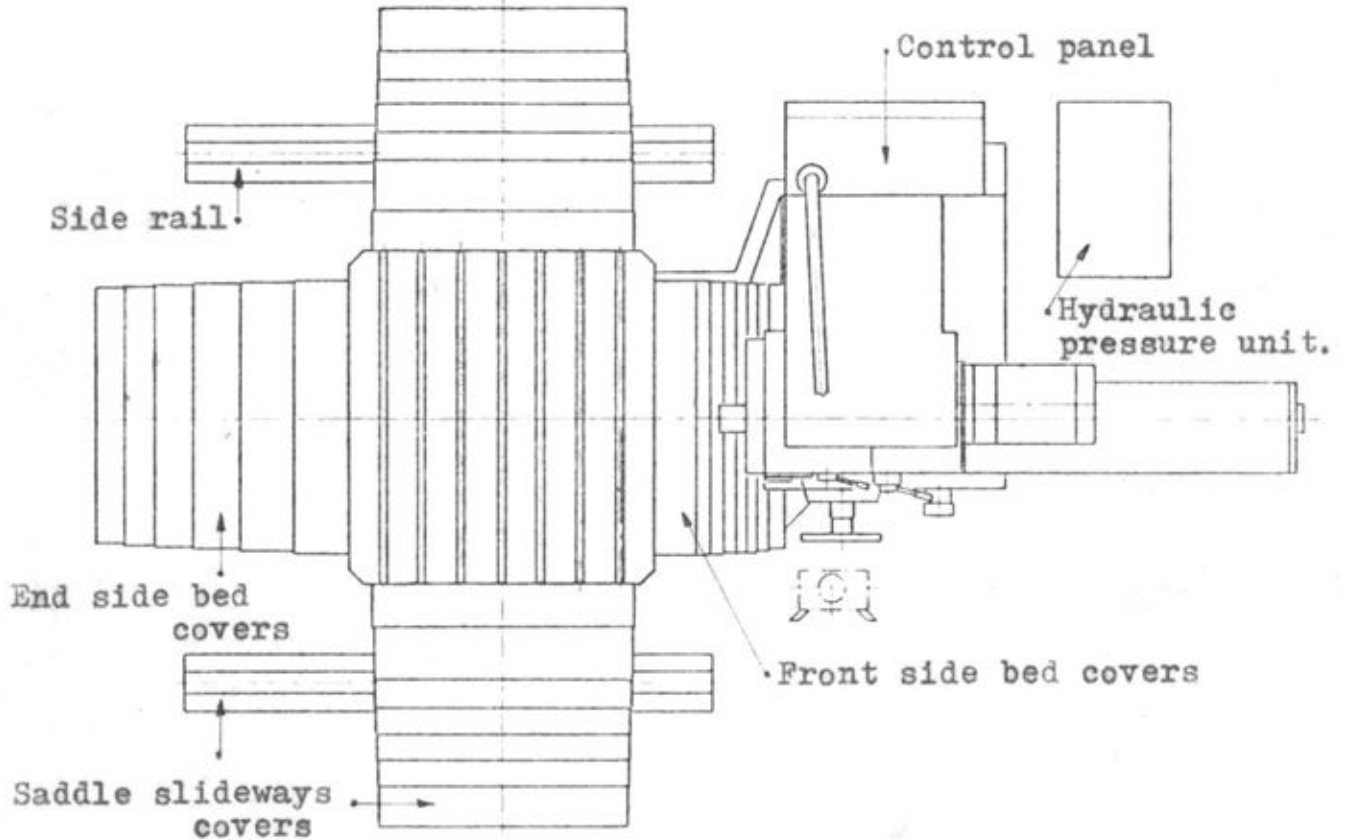


B-100SR

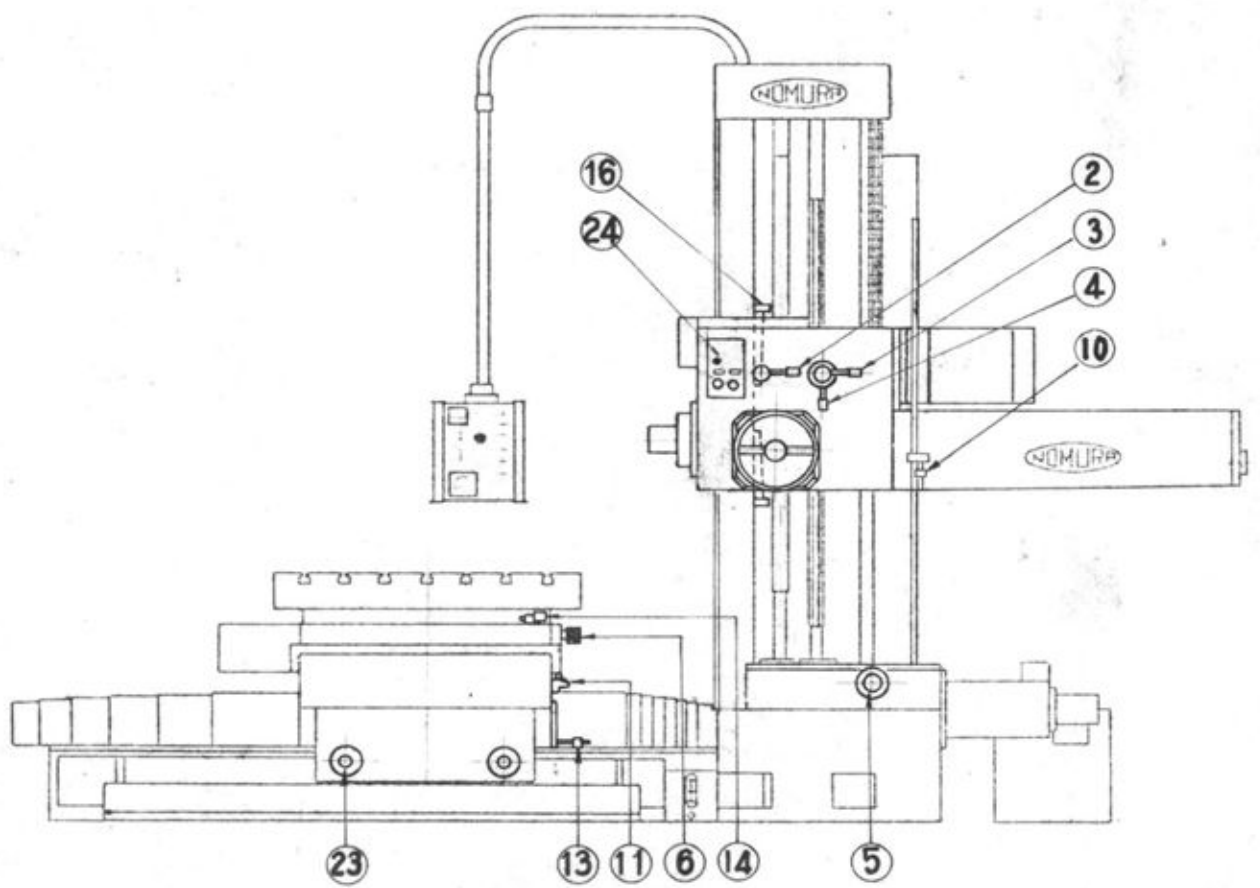
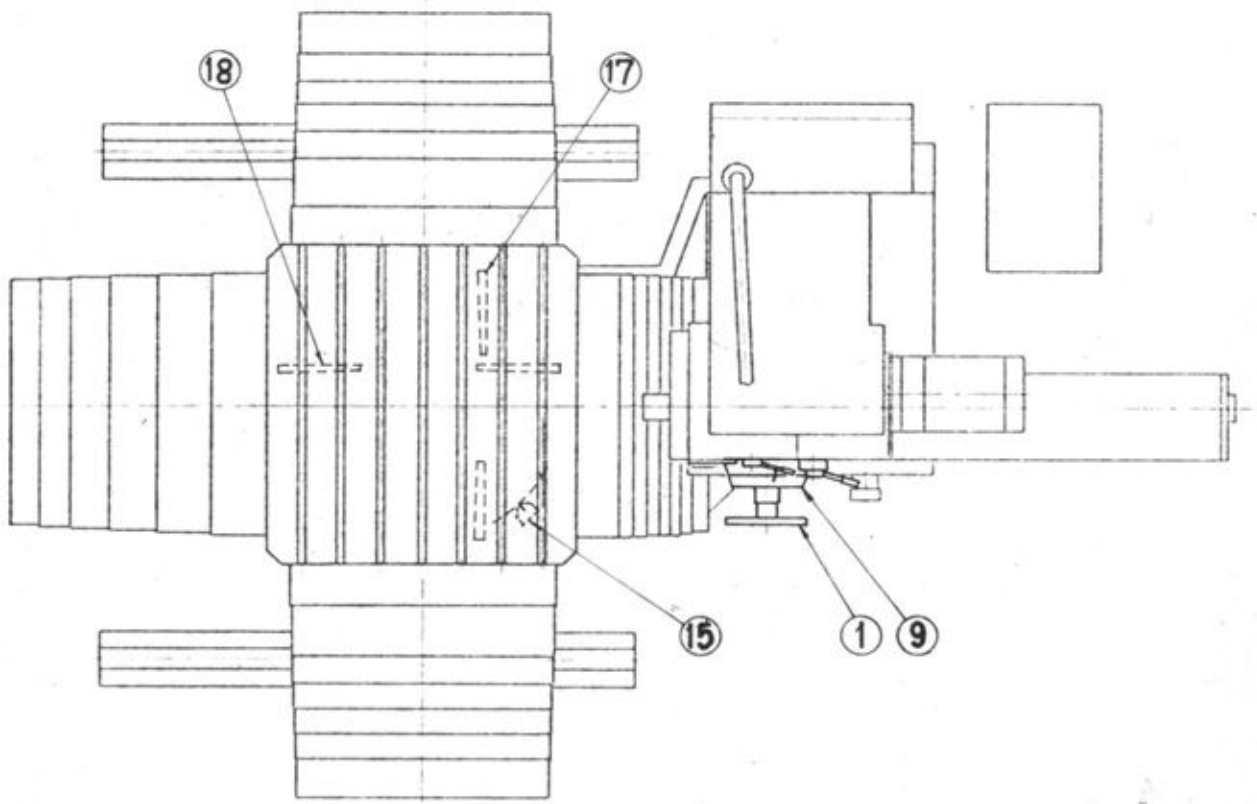
DIMENSIONS OF THE APPEARANCE (II)



2. GENERAL VIEW (I)



GENERAL VIEW (II)



- (1) Handwheel for left-right spindle movement
- (2) Spindle speed control lever
- (3) Spindle speed control lever
- (4) Spindle speed control lever
- (5) Handle shaft for X, Y, Z axis manual feed
- (6) Handle shaft for table rotation

- (9) Scale for left-right spindle movement
- (10) Scale for up-down headstock movement
- (11) Scale for forward-backward table movement

- (13) Scale for left-right saddle movement
- (14) Optical device for indexing rotary table
- (15) Pointer for indexing rotary table at any desired angle
- (16) Gibs for adjusting headstock
- (17) Gibs for adjusting table
- (18) Gibs for adjusting saddle

- (23) Shaft for adjusting eccentricity of saddle support
- (24) Tool changing switch



4. SPECIFICATIONS

(Basic)

Spindle diameter	3.94 in. (100 mm)
Milling spindle diameter	8.46 in. (215 mm)
Spindle taper	Morse No.6 or ISO-50(option)
Spindle speeds	18 steps High-speed type 21 - 1200 rpm Medium-speed type 14 - 800 rpm Low-speed type 10 - 570 rpm
Feeds of spindle	Stepless in 2-ranges High-speed range 1.25 - 62.5 in/min. (31.5 - 1575 mm/min.) Low-speed range 0.025 - 1.25 in/min. (0.63 - 31.5 mm/min.)
Feeds of headstock, table & saddle	Stepless in 2-ranges High-speed range 2 - 100 in/min. (50 - 2500 mm/min.) Low-speeds range 0.04 - 2 in/min. (1 - 50 mm/min.)
Rapid feed of spindle	78 in/min. (2000 mm/min.)
Rapid feed of headstock, table & saddle	126 in/min. (3200 mm/min.)
Spindle travel	26 in. (650 mm)
Motor for hydraulic unit pump	AC 2HP 4P
Motor for headstock & gearbox lubrication pump	AC 0.5HP 4P
Motor for slideways lubrication pump	AC 0.1HP 4P

(Selective)

Rotary table type (R)

Rapid rotation of rotary table	1.3 rpm
Headstock vertical travel	50 in. (1270 mm)
Table cross traverse	60 in. (1420 mm)
Table longitudinal travel	43 in. (1100 mm)
Max. distance between milling spindle end & outer support	98.6 in. (2505 mm)
Table size	45 in. x 50 in. (1145mm x 1270mm)
Max. load on table	11000 lbs (5000kg)
Height of table top from bed bottom	38.5 in. (980 mm)
Main motor	AC 20HP (15 KW)
Feed motor	DC 5HP (3.7KW)

Plane table type (P)

Headstock vertical travel	50 in. (1270 mm)
Table cross traverse	72 in. (1830 mm)
Table longitudinal travel	43 in. (1100 mm)
Max. distance between milling spindle end & outer support	98.6 in. (2505 mm)
Table size	48 in. x 80 in. (1220mm x 2020mm)
Max. load on table	11000 lbs (5000kg)
Height of table top from bed bottom	36 in. (910 mm)
Main motor	AC 20HP (15 KW)
Feed motor	DC 5HP (3.7KW)

Short bed rotary table type (SR)

Rapid rotation of rotary table	1.3 rpm
Headstock vertical travel	50 in. (1270 mm)
Table cross traverse	60 in. (1420 mm)
Table longitudinal travel	43 in. (1100 mm)
Table size	45 in. x 50 in. (1145mm x 1270mm)
Max. load on table	11000 lbs (5000kg)
Height of table top from bed bottom	38.5 in. (910 mm)
Main motor	AC 20HP (15 KW)
Feed motor	DC 5HP (3.7KW)



Short bed plane table type (SP)

Headstock vertical travel	50 in. (1250 mm)
Table cross traverse	80 in. (2030 mm)
Table longitudinal travel	43 in. (1100 mm)
Table size	48 in. x 80 in. (1220mm x 2020mm)
Max. load on table	11000 lbs (5000kg)
Height of table top from bed bottom	35.8 in. (910mm)
Main motor	AC 20HP (15 KW)
Feed motor	DC 5HP (3.7KW)

Light duty plane table type (LP)

Headstock vertical travel	50 in. (1250 mm)
Table cross traverse	60 in. (1525 mm)
Table longitudinal travel	32 in. (813 mm)
Table size	40 in. x 55 in. (1020mm x 1400mm)
Max. load on table	6600 lbs (3000kg)
Height of table top from bed bottom	37 in. (940 mm)
Main motor	AC 15HP (11 KW)
Feed motor	DC 3HP (2.2KW)

Width plane table type (WP)

Headstock vertical travel	72 in. (1830 mm)
Table cross traverse	96 in. (2440 mm)
Table longitudinal travel	43 in. (1100 mm)
Table size	48 in. x 96 in. (1220mm x 2440mm)
Max. load on table	13200 lbs (6000kg)
Height of table top from bed bottom	36 in. (910 mm)
Main motor	AC 20HP (15 KW)
Feed motor	DC 5HP (3.7KW)

5. ACCESSORIES

Scale with vernier (for headstock vertical travel, table cross traverse and table longitudinal travel)	3 sets
90° indexing optical reader (for rotary table)	1 set
Dial scale with vernier (for spindle left-right movement)	1 set
Hydraulic power unit	1 set
Special, disassembly/assembly and operation tools	1 set
Electrical equipment	1 set
Installation parts	1 set
Telescopic steel cover (for bed slideways between the column and saddle, and for saddle slideways)	1 set
Working light	1 set

Table of standard tools and spare parts

Parts name	Q'ty	Size and purpose
Double ended spanner	1 pc.	17 x 19
Single ended spanner	3 pcs.	36, 41, 55
Hexagonal bar spanner	11 pcs.	3, 4, 5, 6, 8, 10, 12, 14, $\frac{3}{16}$, $\frac{3}{8}$, $\frac{5}{8}$
Pull stud	6 pcs.	P50T Boring spindle
Tool holder	1 pc.	Boring spindle
Crank handle	1 pc.	19 mm
	1 pc.	1/2
Screw driver	1 sets	
Eye-bolt	sets	M10, M24,
Flat-head socket screw	6 pcs.	M16 x 20
Grease-gun	1 pc.	
Dust seal	1 pc.	Boring spindle
Tool cabinet	1 set	